



CHANGE LIGHT-LY®

!NS!GHTS

RESPONSIBILITY ⊕ PROFITABILITY ⊕ SUSTAINABILITY

# IMPROVE YOUR KEY PERFORMANCE INDICATORS

- ✓ Keep People Inspired
- ✓ Keep People Innovating
- ✓ Keep People Interested
- ✓ Keep People Indulged
- ✓ Keep People Intrigued
- ✓ Keep People Independend
- ✓ Keep People Included

They will automatically improve your your qualitative, financial, and timely KPIs!



COMMITMENT

HOPE

AMBITION

NOVELTIES

GOALS

EMPATHY



# CHANGE IS TRANSFORMATION

CONCERN → COMMITMENT

HESITANCY → HOPE

ANXIETY → AMBITION

NEGLECT → NOVELTIES

GUILT → GOALS

EMERGENCIES → EMPATHY



When it comes to change  
a crisis is a chance, a challenge  
and an opportunity.

Never miss the momentum of  
change when times are getting  
tough.



# THE ESSENCE OF CHANGE MANAGEMENT IS TO CREATE

1. the desire for a new approach

2. the curiosity to learn the  
neccessary skills

&

3. the determination to use these  
skills to achieve a common goal



# TRANSFORMATION NEEDS TO BE SEEN AND EXPERIENCED:

- Changed seating arrangements
- Office renovations
- Optimized lighting
- New office chairs
- New logo and corporate identity
- Joint tidying up and decluttering



Doing a great job is not  
about making no  
mistakes.

It is about properly  
dealing with the mistakes  
we make!

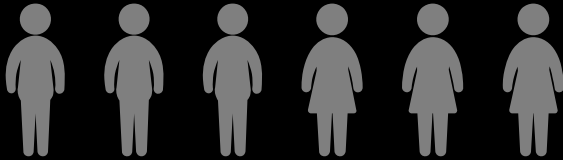




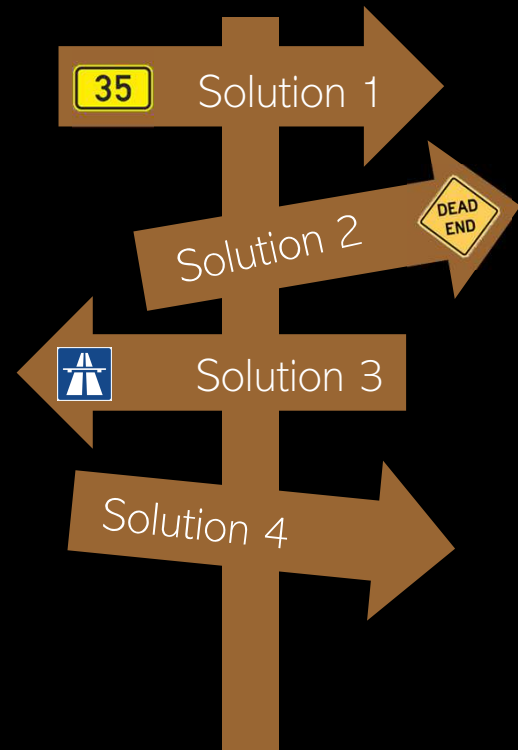
DETERMINATION  
INSPIRATION  
VERSATILITY  
EXPERTISE  
RICHNESS  
STRENGTH  
INNOVATION  
TRANSFORMATION  
YIELD



# UNIFORM TEAM



# DIVERSE TEAM



# HIRE EMPLOYEES WHO SPEAK MULTIPLE LANGUAGES!

Employees who speak multiple languages have a broader view and an open mind.

They often see the bigger picture clearly and can contribute to defining in a unique way.

They don't even have to be the expert; their analytic mind and ability to interact in different languages with different cultures enables them to think laterally and creatively.



# LEADERSHIP

LISTENING

EMPATHY

AUTHENTICITY

DEVOTION

ENERGY

RESPECT

SUPPORT

HONESTY

INSPIRATION

PASSION



# NOBODY IS PERFECT

## TRUE LEADERS

- Make mistakes
- Admit their mistakes
- Apologize for their mistakes
- Ask for help and advice
- rectify their mistakes



Listen to your employees!  
No manager can see  
everything!

All perspectives are required  
for a holistic view and  
approach  
to make sustainable choices!



Everything has its time.

You must be aware of all problems, but not all of them  
can be solved at once.

Wait until the opportunity arises to solve a particular  
problem.

Then be ready to prioritize & tackle it!



United for Innovation: Transforming Electronics  
Manufacturing Across Europe.

#ProudlyEngineeredInEurope





 Every crisis is a chance! 

Let's remind ourselves in light of  
recent events,  
that Europe is a strong and versatile  
economy with amazing innovative  
power and great efficiency – as long  
as we collaborate!

Let's make the most of European  
diversity and creativity!

[#ProudlyEngineeredInEurope](#)



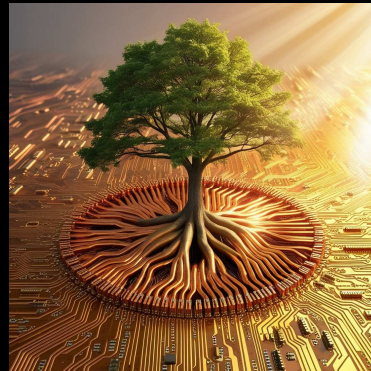


CONTACT US FOR YOUR SUCCESSFUL TRANSFORMATION!

CHANGE LIGHT-LY

COLDITZSTR. 33  
12099 BERLIN

INFO@CHANGE-LIGHTLY.EU  
WWW.CHANGE-LIGHTLY.EU



RESPONSIBILITY ⊕ PROFITABILITY ⊕ SUSTAINABILITY